



Glue Line

127

Pharmacode Reads This Way
 First Bar → Last Bar

Data Matrix Code 5x5mm with 3.175mm clear area.
 14x14 Matrix
 Revision Date Code and the Item Number separated by a space (MMDDYY 1234567).

RB Artwork and Print Specification

Trident Reference No:	RB354141
ZEN Ref:	TR1490094
Action:	C
Brand:	Mucinex
Category:	Adult
Segment Group:	Guaifenesin
Segment:	SE 600mg
Pack Size:	24Tablets
Market/Country:	USA
Date:	30/01/19

RBH Contact: Sripriya Yarlapati

Artwork Type: IDM Commercial

Component Code (2D if applicable):	3085643
Parent Technical Packaging Specification:	D8221809
Finished Goods Code:	63824-00824-00
Supply Point:	RB Nottingham
3rd Party Code:	NA
Pharmacode No/NE:	N/A
Edgemark Position:	9

CAD Cam Ref: Muc-Crt-D8221809-89x22x127mm-feet-FB
 Printer: Multi Packaging Solutions (Nottingham, UK)
 Substrate: Carton Board - White

Technical & Non Printing Items	
Cutter	Cutter 2 (if applicable)
Guides	Guides 2 (if applicable)

Colours (Carton)

PANTONE Cool Gray 1 C	PANTONE 186 C	PANTONE 2995 C	PANTONE 300 C
1 LTH	2 LTH	3 LTH	4 LTH
PANTONE 280 C	PANTONE High Gloss Water Based Ink	Silver Foil	
5 LTH	6 LTH	7 FB	

BARCODE INFO

Barcode Type:	UPC 12
Barcode Number:	363824969855
Magnification:	80%
Truncated By:	2.3 mm
Full Height:	18.7 mm
Bar Height (Smallest Bar):	16.0 mm
BWR:	0 microns
Encoded Data:	N/A



Please note that any low resolution paper Canon colour copies associated with this job should be referred to for content, layout and colour separation only.

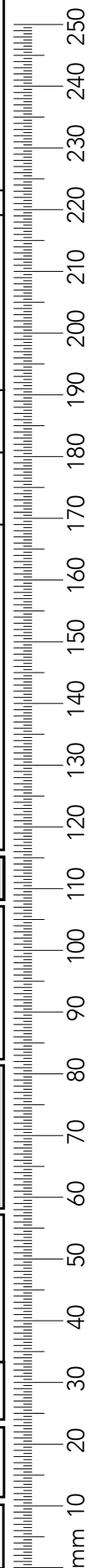
UNDER NO CIRCUMSTANCES SHOULD THIS ARTWORK BE ALTERED WITHOUT PRIOR PERMISSION FROM TRIDENT.

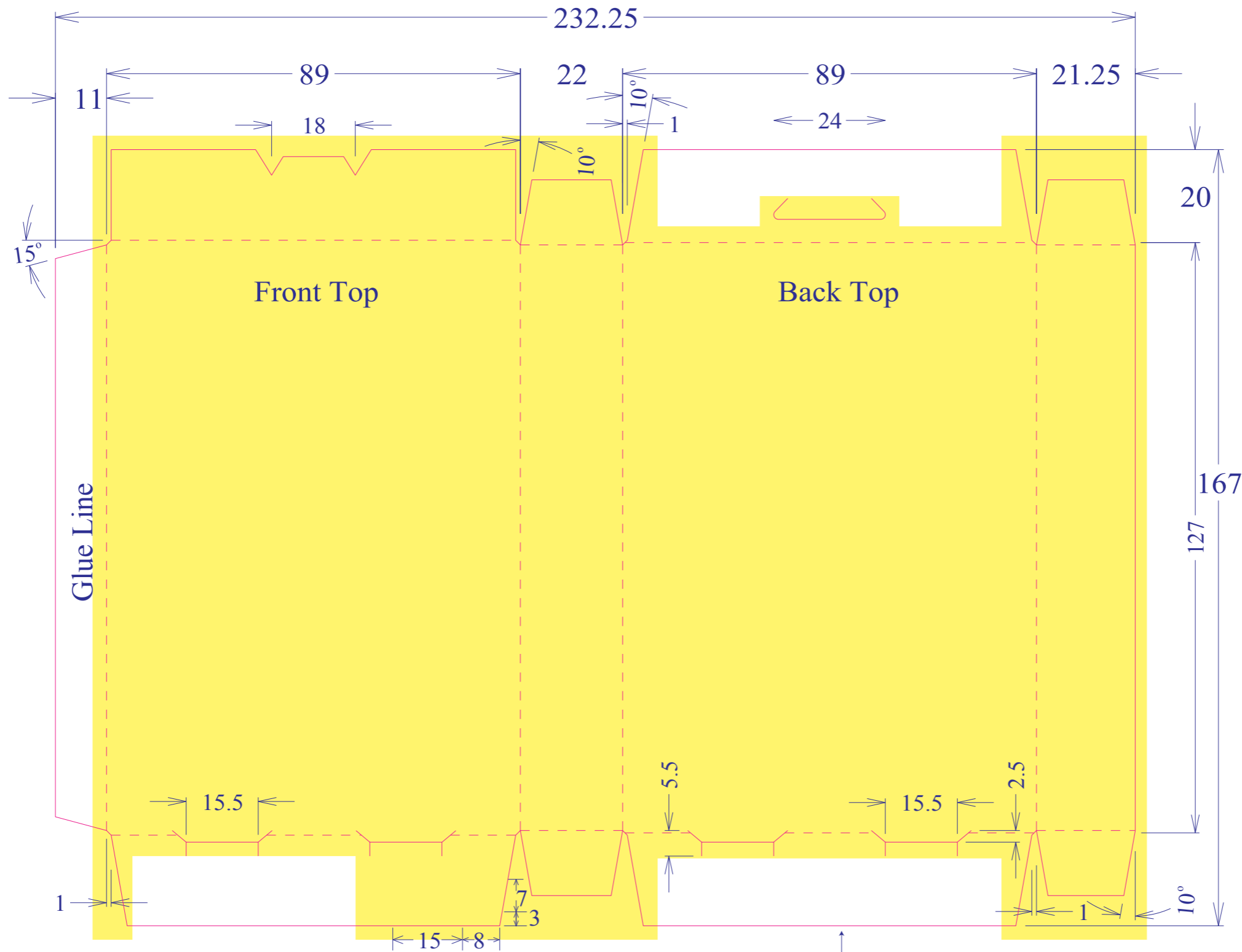
STUDIO USE ONLY Joe Billish v2.0
 Sm•Art check results: G=2; O=3; R=0; - JB - 01/30/19 08:08:53

MIN PT SIZE & HEIGHT (Non-Automated)

NET WT (ie. 5 FL OZ 150ml):	.16inch	16pt
Drug Facts Title:	.14inch	14pt
Active Ingredient Title:	.08inch	8pt
Active Ingredient (BOP Ingredient):	.06inch	6pt
Min Size of all other Copy:	.06inch	6pt

This Box 1/2 x 1/2 Inch Square	Front PDP in square inches:	17.74
	Rear PDP in square inches:	17.74





Data Matrix Code 5x5mm with 3.175mm clear area.
14x14 Matrix
 Revision Date Code and the Item Number separated by a space (MMDDYY 1234567).

MIN PT SIZE & HEIGHT (Non-Automated)	
NET WT (ie. 5 FL OZ 150ml):	.16inch 16pt
Drug Facts Title:	.14inch 14pt
Active Ingredient Title:	.08inch 8pt
Active Ingredient (BOP Ingredient):	.06inch 6pt
Min Size of all other Copy:	.06inch 6pt
This Box 1/2 x 1/2 Inch Square	Front PDP in square inches : 17.74 Rear PDP in square inches : 17.74

RB Artwork and Print Specification

Trident Reference No: RB354141
 ZEN Ref: **TR1490094**
 Action: **C**
 Brand: Mucinex
 Category: Adult
 Segment Group: Guaifenesin
 Segment: SE 600mg
 Pack Size: 24Tablets
 Market/Country: USA
 Date: 30/01/19

RBH Contact: Sripriya Yarlapati

Artwork Type: IDM Commercial

Component Code (2D if applicable): **3085643**
 Parent Technical Packaging Specification: D8221809
 Finished Goods Code: **63824-00824-00**
 Supply Point: RB Nottingham
 3rd Party Code: NA
 Pharmacode No/NE: N/A
 Edgemark Position: 9

CAD Cam Ref: Muc-Crt-D8221809-89x22x127mm-feet-FB
 Printer: Multi Packaging Solutions (Nottingham, UK)
 Substrate: Carton Board - White

Technical & Non Printing Items
 Cutter Cutter 2 (if applicable)
 Guides Guides 2 (if applicable)

Colours (Carton)			
PANTONE Cool Gray 1 C	PANTONE 186 C	PANTONE 2995 C	PANTONE 300 C
1 LTH	2 LTH	3 LTH	4 LTH
PANTONE 280 C	RB High Gloss Water Based Silver	Silver Foil	
5 LTH	6 LTH	7 FB	

BARCODE INFO

Barcode Type: UPC 12
 Barcode Number: 363824969855
 Magnification: 80%
 Truncated By: 2.3 mm
 Full Height: 18.7 mm
 Bar Height (Smallest Bar): 16.0 mm
 BWR: 0 microns
 Encoded Data: N/A

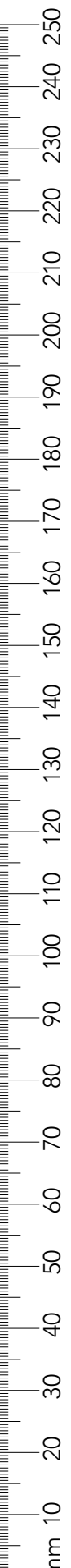


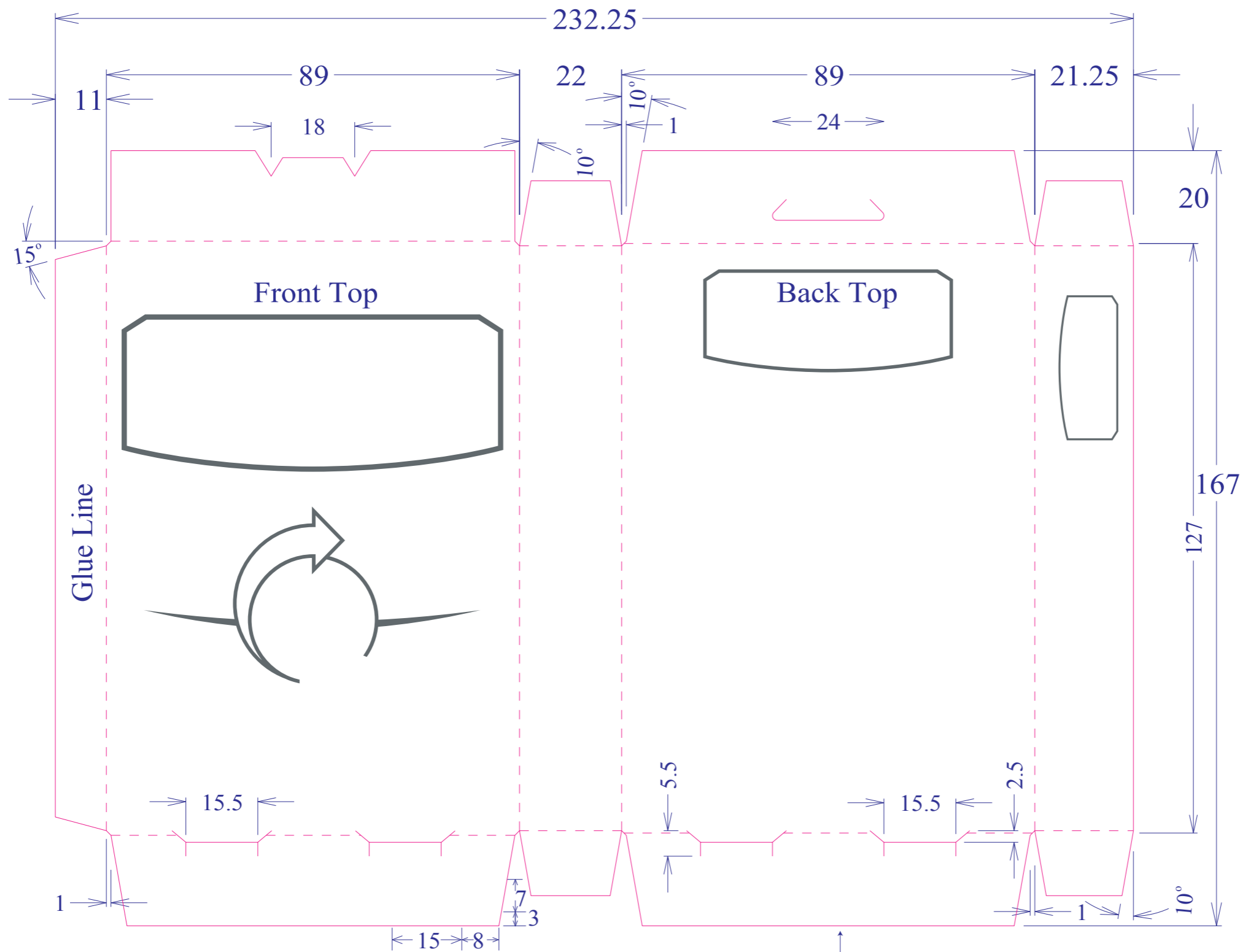
TRIDENT
 Connaught House, Connaught Road,
 Kingswood Business Park, Hull, HU7 3AP, England.
 T: +44 (0) 1482 828100

Please note that any low resolution paper Canon colour copies associated with this job should be referred to for content, layout and colour separation only.

UNDER NO CIRCUMSTANCES SHOULD THIS ARTWORK BE ALTERED WITHOUT PRIOR PERMISSION FROM TRIDENT.

STUDIO USE ONLY Joe Billish **v2.0**
 Sm•Art check results: G=2; O=3; R=0; - JB - 01/30/19 08:08:53





Data Matrix Code 5x5mm with 3.175mm clear area.
14x14 Matrix
 Revision Date Code and the Item Number separated by a space (MMDDYY 1234567).

RB Artwork and Print Specification

Trident Reference No: RB354141
 ZEN Ref: **TR1490094**
 Action: **C**
 Brand: Mucinex
 Category: Adult
 Segment Group: Guaifenesin
 Segment: SE 600mg
 Pack Size: 24Tablets
 Market/Country: USA
 Date: 30/01/19

RBH Contact: Sripriya Yarlapati

Artwork Type: IDM Commercial

Component Code (2D if applicable): **3085643**
 Parent Technical Packaging Specification: D8221809
 Finished Goods Code: **63824-00824-00**
 Supply Point: RB Nottingham
 3rd Party Code: NA
 Pharmacode No/NE: N/A
 Edgemark Position: 9

CAD Cam Ref: Muc-Crt-D8221809-89x22x127mm-feet-FB
 Printer: Multi Packaging Solutions (Nottingham, UK)
 Substrate: Carton Board - White

Technical & Non Printing Items
 Cutter (Pink square) Cutter 2 (if applicable) (Purple square)
 Guides (Blue square) Guides 2 (if applicable) (Green square)

Colours (Carton)			
PANTONE Cool Gray 1 C	PANTONE 186 C	PANTONE 2995 C	PANTONE 300 C
1 LTH	2 LTH	3 LTH	4 LTH
PANTONE 280 C	RBH High Gloss Water Based Ink	Silver Foil	
5 LTH	6 LTH	7 FB	

BARCODE INFO

Barcode Type: UPC 12
 Barcode Number: 363824969855
 Magnification: 80%
 Truncated By: 2.3 mm
 Full Height: 18.7 mm
 Bar Height (Smallest Bar): 16.0 mm
 BWR: 0 microns
 Encoded Data: N/A



Please note that any low resolution paper Canon colour copies associated with this job should be referred to for content, layout and colour separation only.

UNDER NO CIRCUMSTANCES SHOULD THIS ARTWORK BE ALTERED WITHOUT PRIOR PERMISSION FROM TRIDENT.

STUDIO USE ONLY Joe Billish v2.0
 Sm•Art check results: G=2; O=3; R=0; - JB - 01/30/19 08:08:53

MIN PT SIZE & HEIGHT (Non-Automated)	
NET WT (ie. 5 FL OZ 150ml):	.16inch 16pt
Drug Facts Title:	.14inch 14pt
Active Ingredient Title:	.08inch 8pt
Active Ingredient (BOP Ingredient):	.06inch 6pt
Min Size of all other Copy:	.06inch 6pt
This Box 1/2 x 1/2 Inch Square	Front PDP in square inches: 17.74 Rear PDP in square inches: 17.74



Production line		
Manufacturing site		
Pack Tech approver	1st 2nd	
Date		
Check Criteria	Details Et Comments	Checks
Approvals		1st 2nd
Market Approval		
Regulatory Approval		
3rd Party Approval		
Technical Drawing/Cutter ref no.		
PPI component code correct on artwork?		
Correct drawing for the production line?		
Profile shape Et dimensions		
Graphics layout/orientation		
Unwind diagram (PPTD1022/1-20)		
Printable areas/bleed		
Varnish free areas		
Variable coding position Et dimensions		
Varnish and print requirements		
Pre-printed headers (alignment and suitability)		
Embossing, Braille Et Foil Blocking		
Separations on artwork		
Alignment within cutter		
Braille structure		
Verification Code Type; Pharma Code / 2D / OCV		
Bar sequence and/or number correct Position		
Size (height, width, spacing, font)		
Direction of read		
Light margins and print free areas		
Colour		
Repeat distance (reeled material)		
Cross check related docs ie BOM		
Bar code Type; EAN, ITF, Code39, etc		
Magnification / width and height		
Colour (e.g. black print on white background)		
Light margins Et indicators		
Bearer bars Et H gauges (if required)		
Symbol grade (Pass = A,B,C; Action = D,F)		
Bar code number (human readable)		
Bar code number (encoded Et hidden data)		
Confirm bar code number from source		
Cross check related docs (JDE/PID)		
Photo-electric cell mark / edge marks		
Present Et per Tech drawing?		
Correct pitch?		
Additional markings		
e-mark, recycle logo etc		
Legend box (RB specification)		
Correct component code		
Correct D spec / has cutter changed?		
Correct printer / has printer changed?		
Correct Substrate		
A/W is set up appropriately for this substrate		
Edge mark details		
Pharmacode details		
Colours Et print process		
Varnish		
Barcode information		
General details are correct		
Pass / Fail comments and Signature		
By approving the artwork referenced within this form I authorise it for release to the print supplier		
Additional Comments		

RB Artwork and Print Specification

Trident Reference No: RB354141
ZEN Ref: **TR1490094**
Action: **C**
Brand: Mucinex
Category: Adult
Segment Group: Guaifenesin
Segment: SE 600mg
Pack Size: 24Tablets
Market/Country: USA
Date: 30/01/19

RBH Contact: Sripriya Yarlspati

Artwork Type: IDM Commercial

Component Code (2D if applicable): **3085643**
Parent Technical Packaging Specification: D8221809
Finished Goods Code: **63824-00824-00**
Supply Point: RB Nottingham
3rd Party Code: NA
Pharmacode No/NE: N/A
Edgemark Position: 9

CAD Cam Ref: Muc-Crt-D8221809-89x22x127mm-feet-FB
Printer: Multi Packaging Solutions (Nottingham, UK)
Substrate: Carton Board - White

Technical & Non Printing Items
Cutter Cutter 2 (if applicable)
Guides Guides 2 (if applicable)

Colours (Carton)



BARCODE INFO

Barcode Type: UPC 12
Barcode Number: 363824969855
Magnification: 80%
Truncated By: 2.3 mm
Full Height: 18.7 mm
Bar Height (Smallest Bar): 16.0 mm
BWR: 0 microns
Encoded Data: N/A



Please note that any low resolution paper Canon colour copies associated with this job should be referred to for content, layout and colour separation only.

UNDER NO CIRCUMSTANCES SHOULD THIS ARTWORK BE ALTERED WITHOUT PRIOR PERMISSION FROM TRIDENT.

STUDIO USE ONLY Joe Billish v2.0
Sm*Art check results: G=2; O=3; R=0; - JB - 01/30/19 08:08:53

