

Custom Label & Decal

CUSTOMER
Cherry Rapid Melt
 DESCRIPTION
1 3/4 x 1 3/4 x 2 11/16
 DIMENSIONS
502516 006 trp.ap
 UPB JOB NUMBER
4/19/2018 **206096**
 DATE

This proof is a 6-color process representation of the printed carton you will receive. Please inspect this proof in its entirety for all copy, color identification, overlays and structure. Please clearly mark all changes directly on proof and return to UPB for correction. **UPB is not responsible for any errors not indicated at this time.** Your signature is a contract assuming all responsibility for the information printed on this carton and deems all information contained on this proof to be correct. To continue processing your job and assist in keeping your current delivery date this signed proof must be promptly returned to UPB.

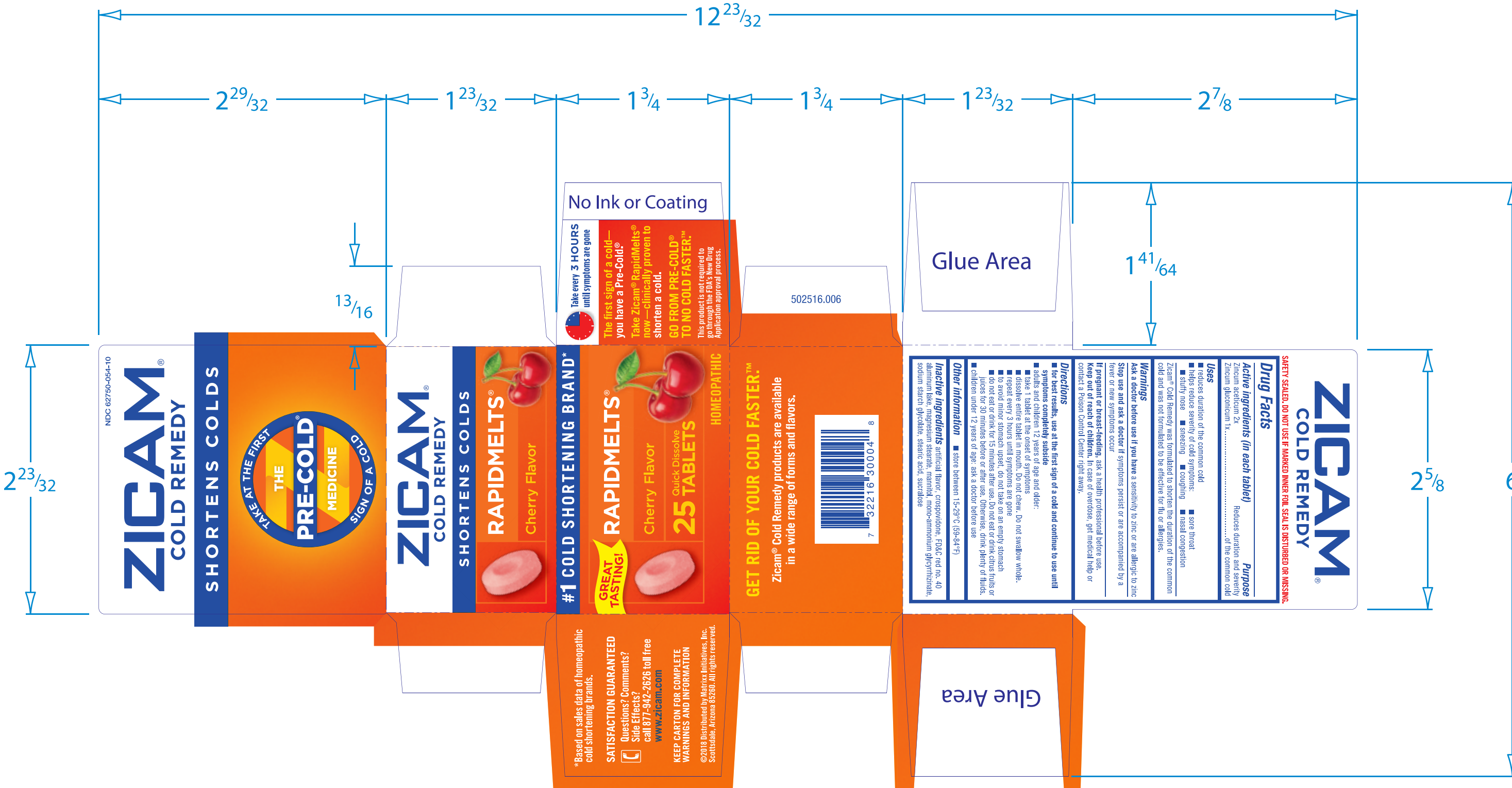
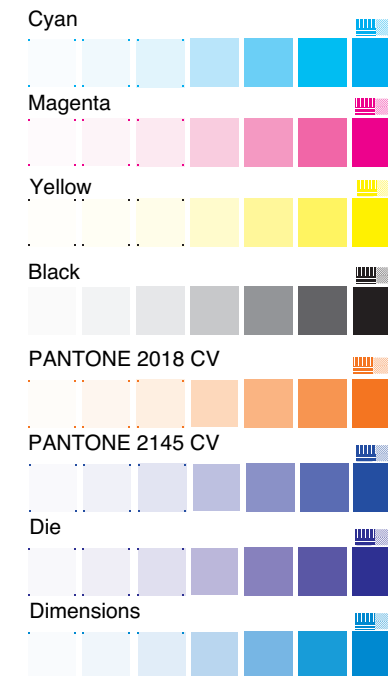
UPB will not guarantee a passing grade on any UPC code smaller (in width) than 1" (measured from bar to bar) and/or has less than .25" of quiet space on both sides of the UPC code. Please contact your UPB representative with any questions or concerns.

UPB is not responsible for the URL assigned to any QR and MS codes. Please verify that these codes are linking correctly prior to signing this proof.

I have inspected this proof, and have clearly marked my approval intentions below:

- Print as is.
- Print with indicated corrections.
- Corrections marked, new proof requested.

Dennis Kolpsk
 CUSTOMER SIGNATURE
4-20-18
 DATE



Document: MSP 8.6-06 Revision: 1 Effective Date: 03/05/18 Approval: Graphics/Prepress Manager